

## **WELDWERKS** Microscopic Welding System Components

Meiji EMZ-10

Binocular Zoom Stereo Body 0.7x-4.5x



**Body: Binocular, rotatable 360°**

**Zoom Ratio: 6.5:1**

**Zoom Range: 0.7x - 4.5x**

**Zoom Control: Dual, graduated, bilateral mount**

**Magnification: 7x - 45x (with 10x eyepieces)**

**Field of View: 32mm - 5.1mm**

**Working distance: 110mm Ü**

**Eyepiece Inclination: 45°**

**Interpupillary Distance Adjustment: 54mm - 75mm**

**Dioptric Adjustment: Dual (+/- 5 diopters)**

**Extended Magnification Range: 2.1x - 270x**

**Extended Working Distances: 45mm - 332mm Ü**

**(with supplemental objectives and eyepieces-optional)**

## F 1 Focus Slide Block



The Focusing Slide Block is designed to hold the stereo microscope body. Rack and Pinion mount allows smooth precise focusing with over 55mm of travel. Course focus mechanism incorporates a slip clutch and tension adjustment.

## 20MM 1 Tilting "F" Focus Slide Block holder

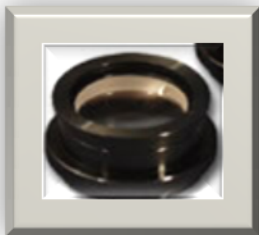


## 25BB 1 Heavy Duty 10 x 10 x 1.25" steel base, 35lbs., 25" x 1.5" stainless steel vertical column

Cast aluminum, powder coated cross block featuring bronze bushings for the vertical axis and Thomson® linear ball bearings and dual hardened stainless steel shafting for the horizontal axis. Includes industry standard 5/8" "Bonder Pin" hole for end on, above or below mounting. Total horizontal motion 12 1/2".



## MA558 1 0.3x auxiliary lens, W.D. 326

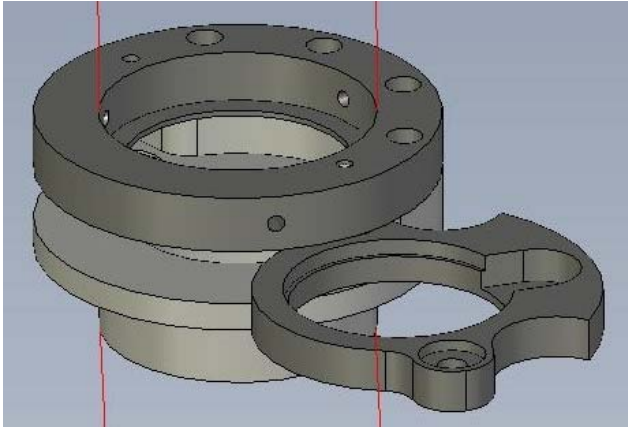


## MA503 1 15x eyepieces (one pair)

Super Wide Field 15x Eyepieces (paired)



## 50199 1 Welding Filter Flipper assembly with #s 6-10 shade filters



## Dual arm 150W fiber optic illumination system

*Dual Arm Fiber Optic Illuminator*



Variable intensity 150W quartz halogen light source with dual arm light guide can be used in a wide range of illumination tasks. UL listed and CSA approved. Available in 110V and 220/240V CE approved models. Color temperature: 3200K.

**21V 150W Replacement Bulb Part Number: FL150/70 Recommend purchasing addl. ones for stock**



## Industrial Hotplate

**High-heat conductivity provides excellent thermal uniformity over the entire heating surface**

This Hot plate features a sturdy stainless steel case that resists spills and corrosion and supports heavy loads. The 12" X 12" hot plates have a 40 lb maximum load capacity\* see note below.

Heating surface resists warping and buckling. Embedded heating elements provide better heat transfer and have a longer life than "open-coil" designs. Perforated side plates on the 12" x 12" and 24" x 24" hot plates allow air circulation—keep controls cool to the touch. For added safety, an indicator lights up when power is supplied to the heating element.

**NOTE:** Much greater weight can be set on top of the plate with the addition of outside supports around the base , this will allow for larger and heavier work pieces.